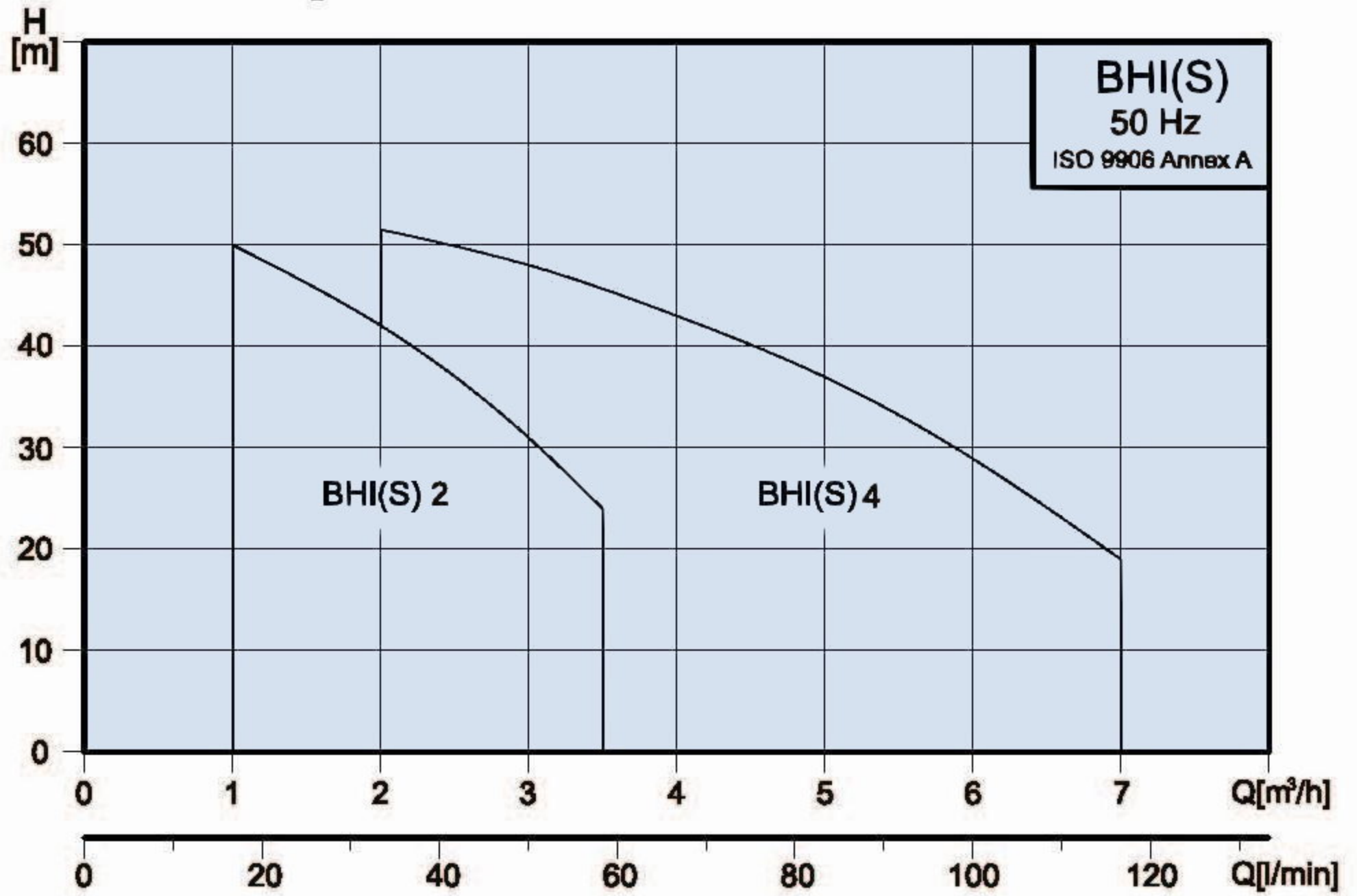


## Performance range, 50Hz



## Applications

Water supply and pressure boosting  
 Air-conditioning  
 Water treatment  
 Heating and cooling in industrial processes  
 Industrial washing and dish-washing machines  
 softened water  
 Pressure boosting of process water  
 Fertilizer/dosing systems



## Pump

A horizontal, multistage centrifugal pump is made of stainless steel. The pump is a non-self priming type and fitted with a mechanical shaft seal.

Connection \ Pump	BHI(S) 2	BHI(S) 4
Suction port	Rp 1	Rp1 1/4
Discharge port	Rp 1	Rp1 1/4
Drain hole, priming hole	G 3/8	G 3/8

## Motor

Totally enclosed and fan-cooled standard motor.

Standard voltages: 1 x 220~240 V, 50Hz

1 x 110/220 V, 60Hz

3 x 220~240 $\Delta$ /380~415Y V, 50Hz

3 x 200~230 $\Delta$ /346~400Y V, 60Hz

Insulation class: F

Enclosure class: IP54

## Operating conditions

Liquid temperature range: 0°C ~+110°C

Maximum ambient temperature: +40°C

Maximum operating pressure: 10 kg./cm<sup>2</sup>.

Maximum inlet pressure is limited by maximum operating pressure.

## Liquids to be pumped

These pumps are designed for pumping freely flowing non-corrosive, non-explosive, and non-flammable liquids. The liquids to be pumped must also be free of solid matter, sands, fibers, and similar materials.

Most common non-highly corrosive watery liquids, oily liquids, hot and cold liquids can be pumped with these pumps.

The suitability of these pumps for pumping any particular liquid depends upon a number of factors, such as the ph value, contents of chemicals such as chlorides, oils, the temperature of the liquids, etc..

Please contact your distributor or the factory if there are any questions as to whether certain liquids are suitable for pumping with these pumps.

### Type key

Example: BHI(S)                      4                      -                      30                      -                      RQQE  
 Type      Nominal flow rate (m<sup>3</sup>/h)      Number of stages x 10      Mechanical Seals

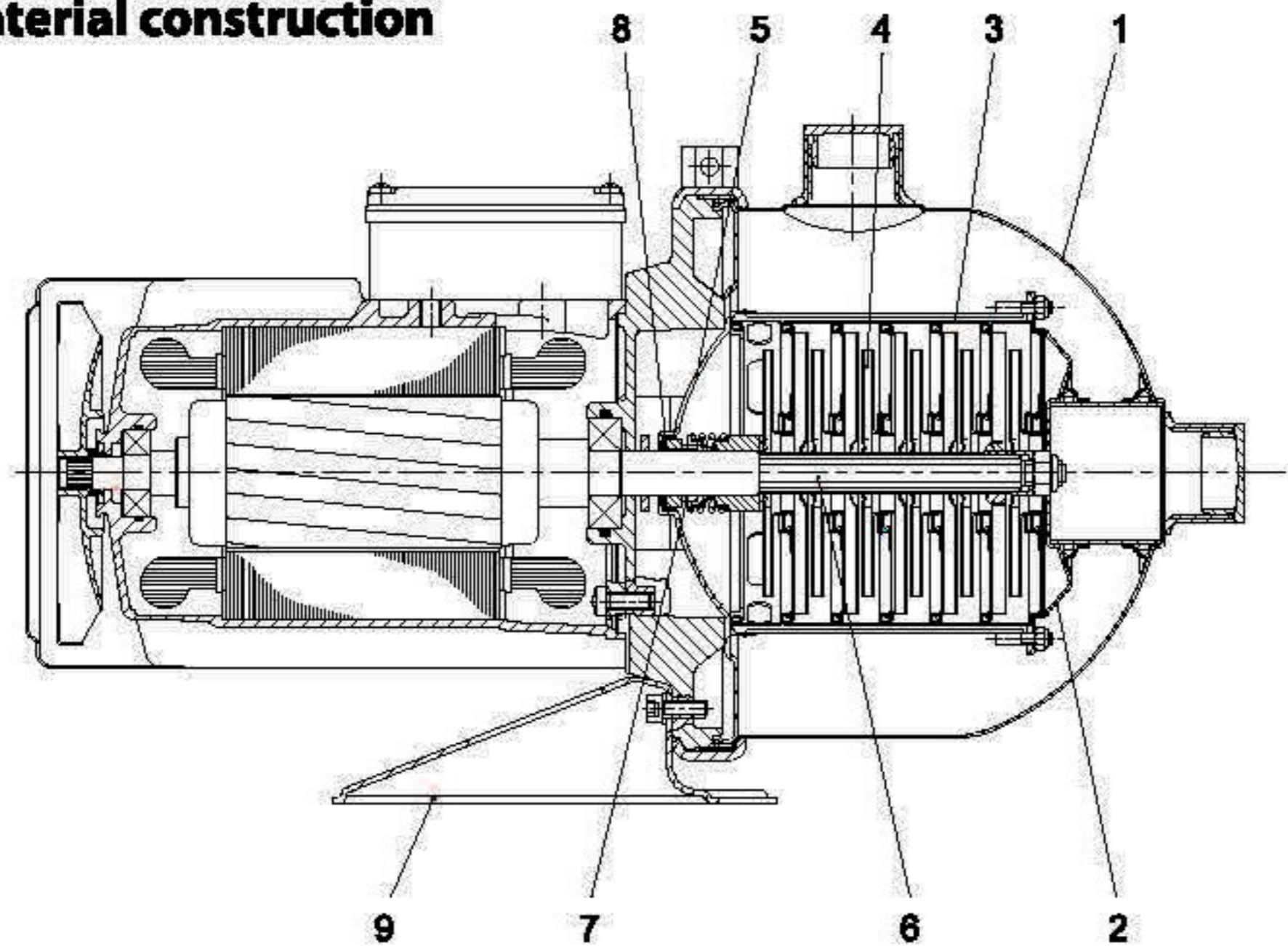
### Mechanical seals

List of Materials	
Q : Silicon carbide	E : EPDM
B : Carbon	V : Viton
R : Seal Type	

Mechanical Seals	BHI 2/4	BHS 2/4
RQQ	Optional	Optional
RQB	●	●
O-rings		
E	●	●
V	●	●

● Standard

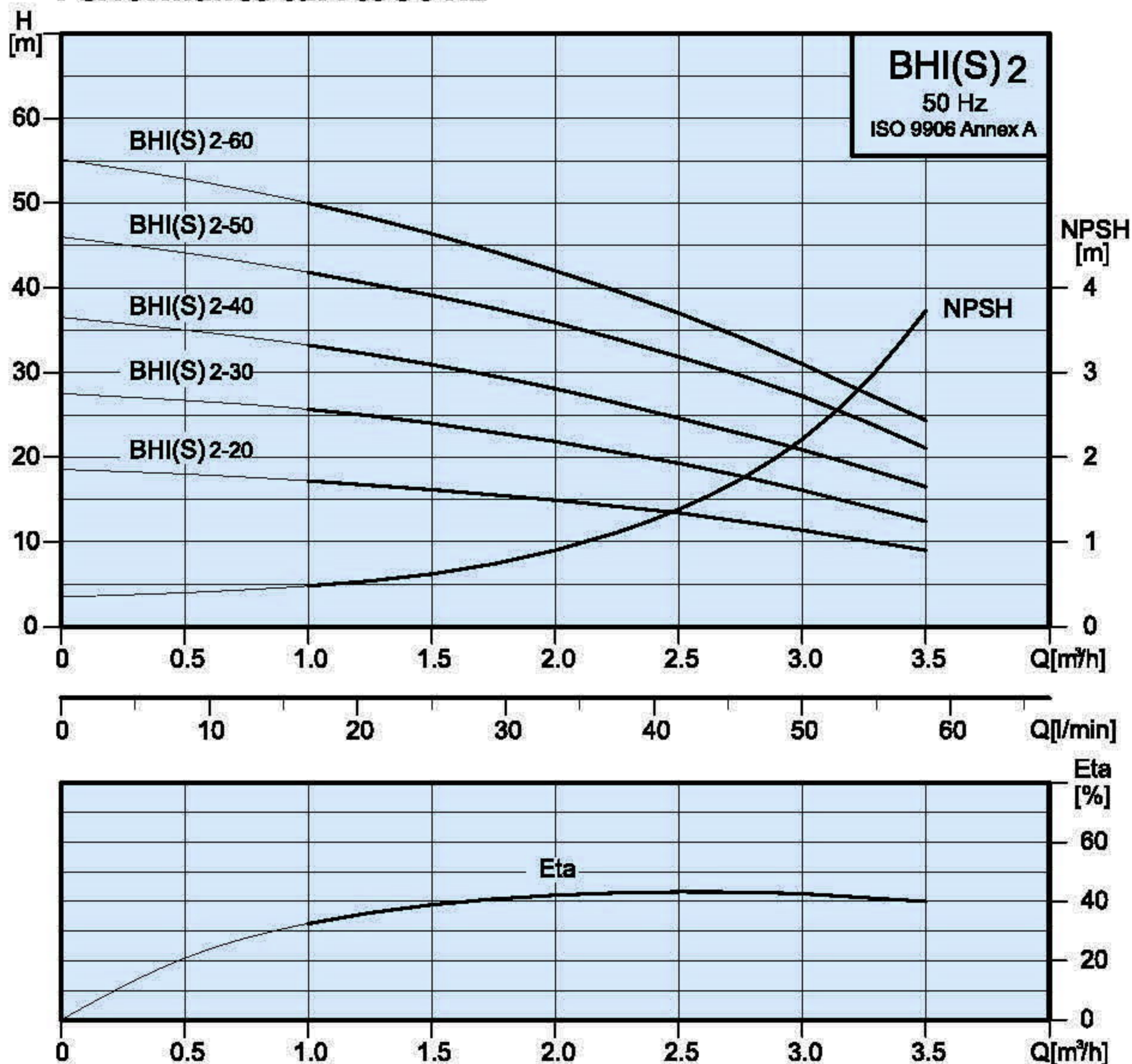
### Material construction



### Materials

Pos.	Description	Materials	
		BHI	BHS
1	Pump casing	SS304	SS316
2	Suction inter-connector	SS304	SS316
3	Chamber	SS304	SS316
4	Impeller	SS304	SS316
5	Cover plate	SS304	SS316
6	Shaft	SS431	SS316
7	Mechanical seal	Silicon carbide/Carbon	Silicon carbide/Carbon
8	O-ring	EPDM or Viton	EPDM or Viton
9	Base plate	Steel	Steel

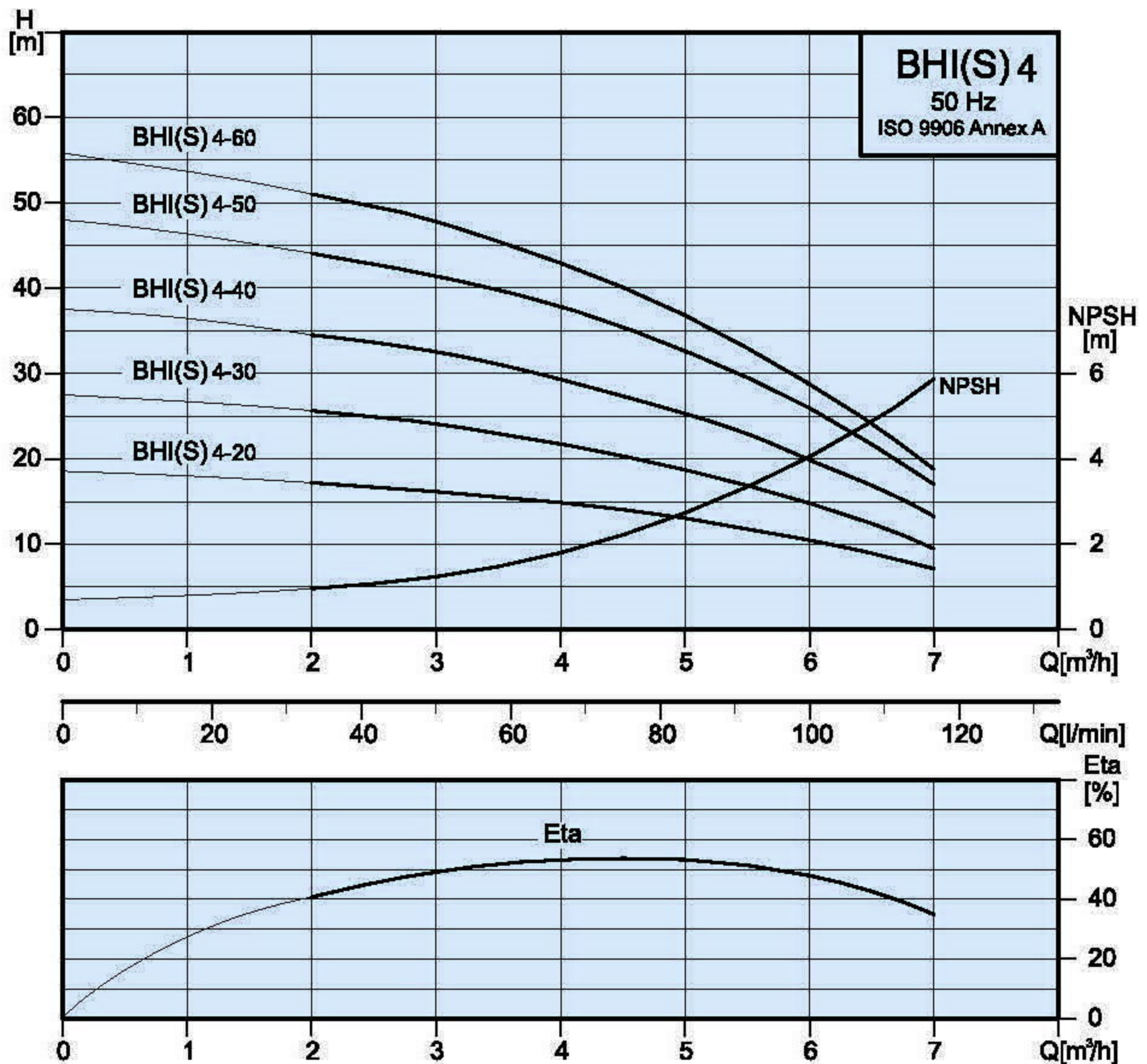
## Performance curves 50 Hz



## Electrical data, 2850 min<sup>-1</sup>

pump type	1 x 220-240 V		3 x 220-240 Δ / 380-415 Y V	
	P <sub>1</sub> [W]	I <sub>m</sub> [A]	P <sub>1</sub> [W]	I <sub>m</sub> [A]
BHI/BHS 2-20	450	1.9	370	1.9 / 1.1
BHI/BHS 2-30	540	2.4	480	1.9 / 1.1
BHI/BHS 2-40	630	2.8	620	2.0 / 1.2
BHI/BHS 2-50	800	3.8	820	2.7 / 1.6
BHI/BHS 2-60	940	4.2	910	2.8 / 1.6

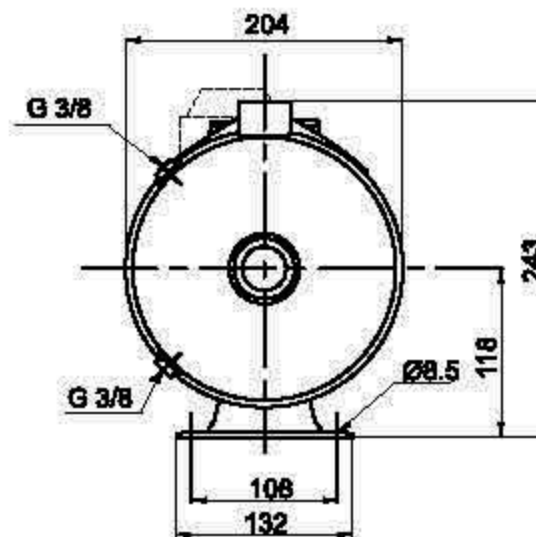
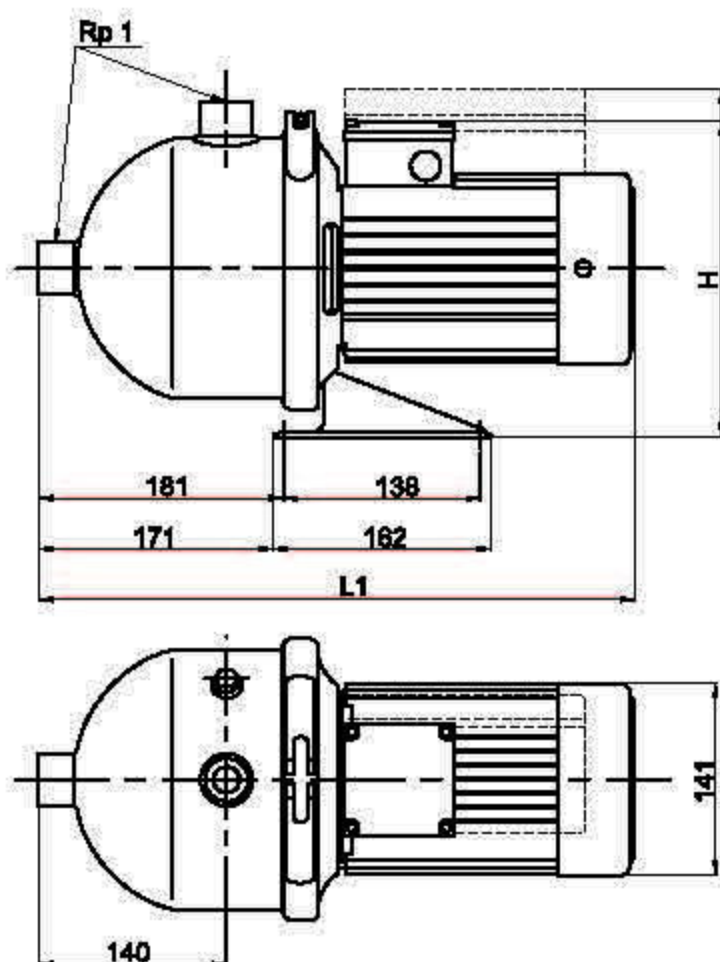
## Performance curves 50 Hz



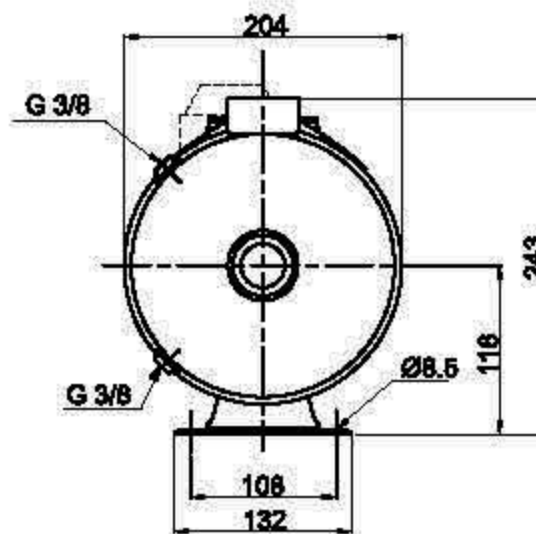
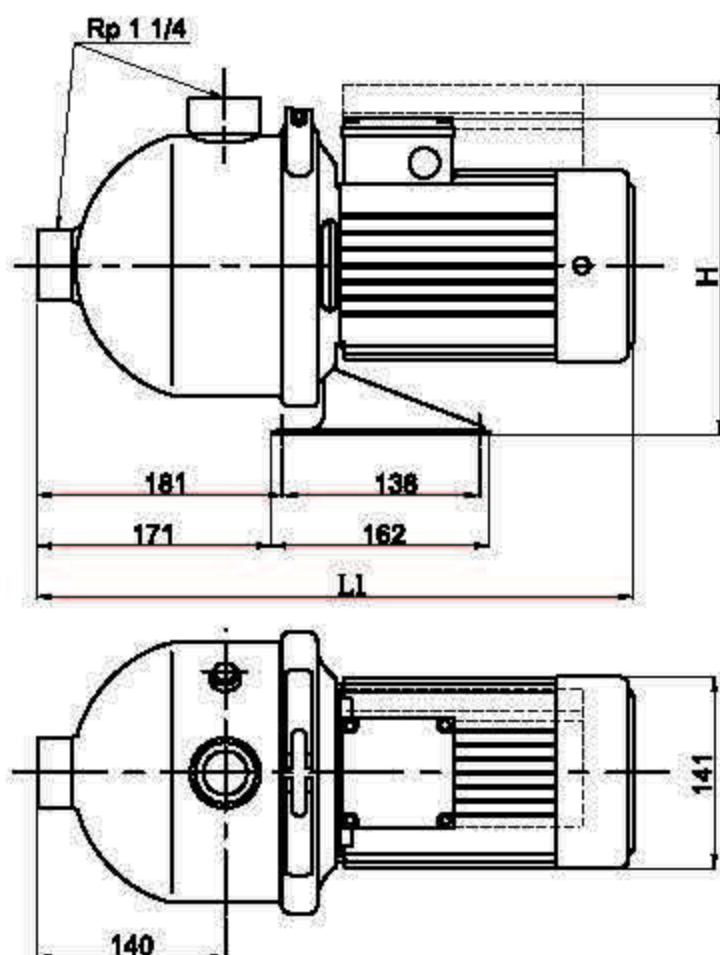
## Electrical data, 2850 min<sup>-1</sup>

pump type	1 x 220-240 V		3 x 220-240 Δ / 380-415 Y V	
	P <sub>1</sub> [W]	I <sub>n</sub> [A]	P <sub>1</sub> [W]	I <sub>n</sub> [A]
BHI/BHS 4-20	560	2.5	560	2.0 / 1.2
BHI/BHS 4-30	760	3.5	720	2.4 / 1.4
BHI/BHS 4-40	1000	4.8	980	3.2 / 1.8
BHI/BHS 4-50	1220	5.7	1210	4.0 / 2.3
BHI/BHS 4-60	1410	6.4	1410	4.8 / 2.7

## BHI(S)2



## BHI(S)4



pump type	Dimension (mm)				Net Weight (kg)
	1-Phase		3-Phase		
	L1	H	L1	H	
BHI/BHS 2-20	403	255	403	233	9.6
BHI/BHS 2-30	403	255	403	233	9.9
BHI/BHS 2-40	403	255	403	233	10.1
BHI/BHS 2-50	403	255	403	233	10.8
BHI/BHS 2-60	403	255	403	233	11.0
BHI/BHS 4-20	403	255	403	233	9.6
BHI/BHS 4-30	403	255	403	233	9.9
BHI/BHS 4-40	403	255	403	233	10.6
BHI/BHS 4-50	441	255	441	233	12.1
BHI/BHS 4-60	441	255	441	233	12.3